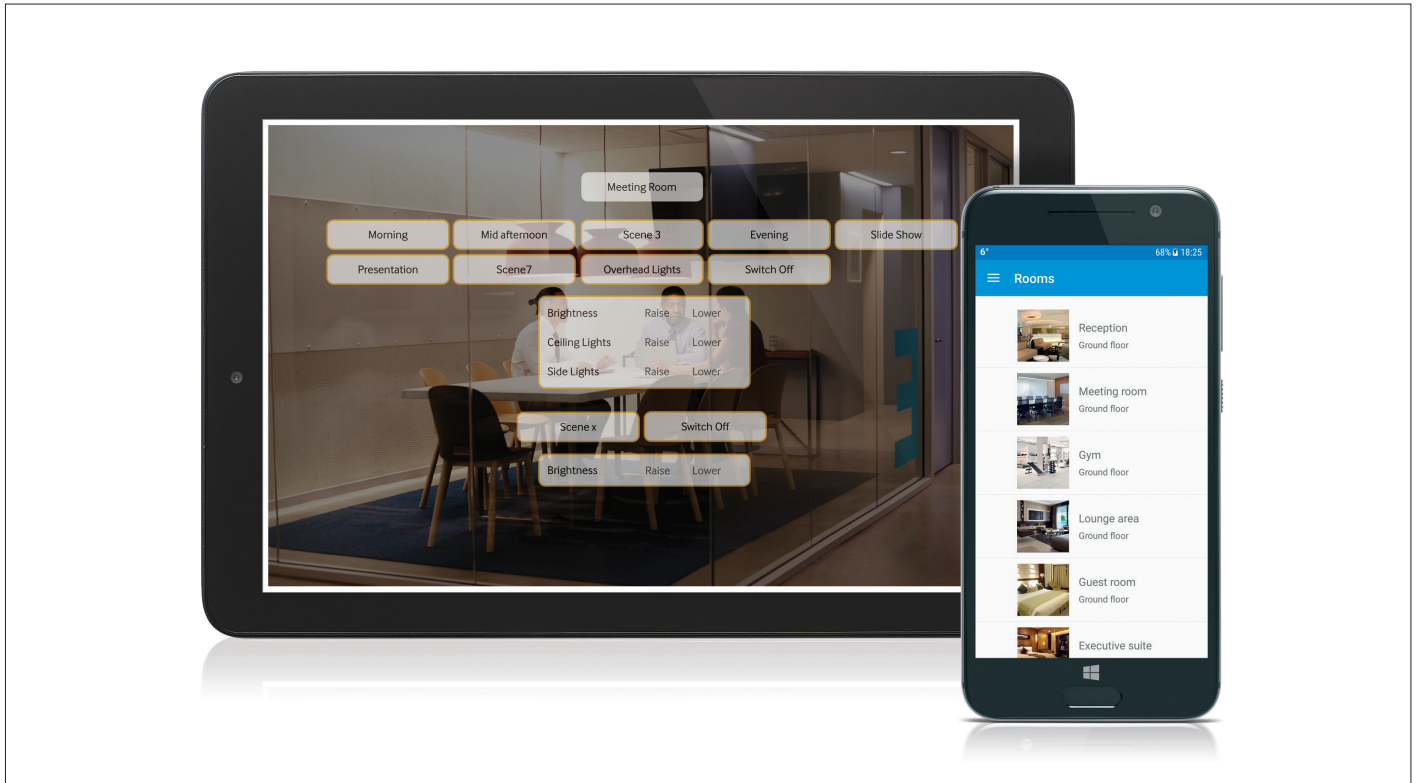


## EBR-TS-WIN | Rapid System Touch Screen EBR-TS and Rapid Scene Control App



A touchscreen that allows the control of customised scene and switch control for a Rapid lighting control system. The look and feel of the scenes screens and the manner it controls the lighting zones is versatile and configurable exact to the needs of the project. Together with the flexibility and power capabilities of the Rapid lighting control system, every single light fixture can be switched and dimmed and controlled as part of the full system energy and comfort control regime.

### Lighting Control Capabilities

- Switch lights ON/OFF
- Raise or lower light levels
- Custom background image for every scene page
- Custom names each switch panel
- Custom names for each scene button and scene plate
- Fast creation template
- Easy link to the control group of the Rapid system
- Interact seamlessly with the rest of the control logic such as occupancy, daylight and time event controls

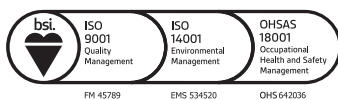
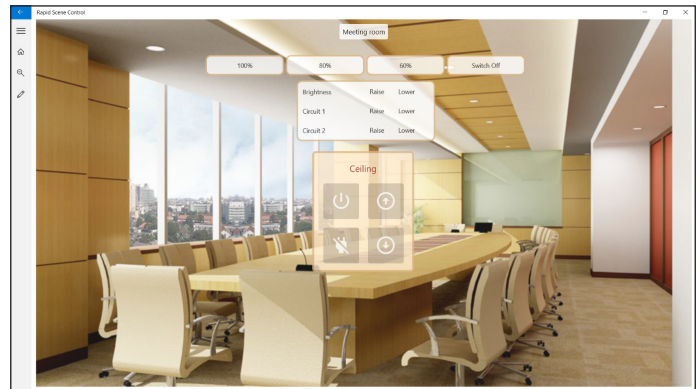
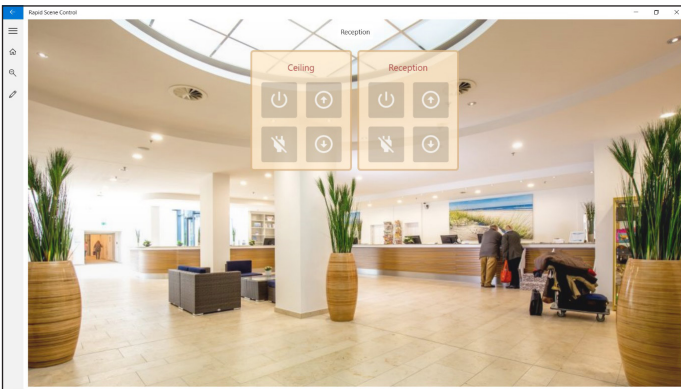
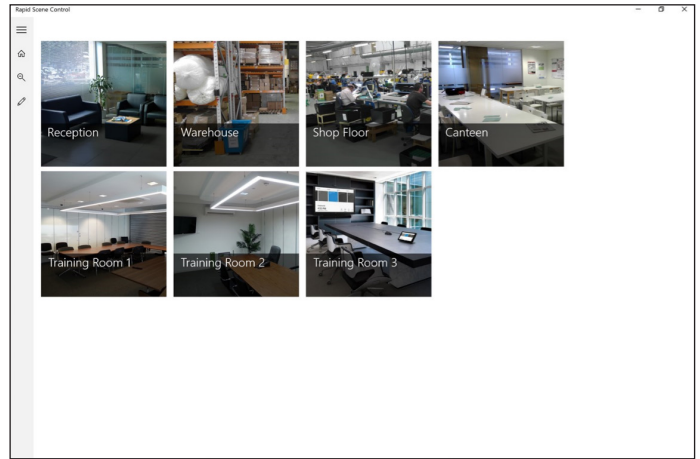
### Key Features:

- Graphical Touchscreen customised to the personal tastes of the individual project where high impact images can be utilised
- Easy to use soft scene panels with easy navigation from master scene control for multiple rooms to individual rooms
- Security access via log in process
- Individual customisable action keys for switching and dimming of individual lights, groups of lights of lights or scenes that suit the mood of the application
- Tidy wall mount bracket for the touchscreen is available
- Cloud based configurations for easy remote management and updates.

The same soft scene panel configurations can be directly offered as an App to run on any mobile or desktop device running on MS Windows platform.

## Technical Data

<b>Part Code</b>	<b>EBR-TS-WIN</b>
<b>Display</b>	Approximately 10in or Larger
<b>Screen Type</b>	Colour Touchscreen
<b>Screen Resolution</b>	1280 x 800 or Better
<b>Audio</b>	Speakers Built-in
<b>RAM Memory</b>	2GB or Better
<b>Memory Storage</b>	32GB or Better
<b>Communications</b>	Wireless WLAN 802.11, Bluetooth
<b>Colour</b>	Black, enquire for other options
<b>Mounting</b>	Wall Mount With Wall Mount Bracket



+44 (0)333 900 0671  
 info@cpelectronics.co.uk  
 www.cpelectronics.co.uk

